

Lampiran I

METODE PEMERIKSAAN KEKERUHAN

Jenis Pemeriksaan	Metode Pemeriksaan
KEKERUHAN	<i>Turbidity meter</i> SNI 06-6989.25-2005
PENGAMBILAN SAMPEL AIR LIMBAH	SNI 6989-59-2008
METODE PENGUJIAN KOAGULASI DAN FLOKULASI DENGAN CARA JARTEST	SNI 19-6449-2000

Hasil Analisis Uji One Way Anova

Tabel V.1
Tests of Normality

	KELOMPOK PERLAKUAN	Kolmogorov-Smirnov ^a			Shapiro-Wilk		
		Statistic	df	Sig.	Statistic	Df	Sig.
DOSIS PAC	PERLAKUAN 1	.136	5	.200*	.987	5	.967
	PERLAKUAN 2	.136	5	.200*	.987	5	.967
	PERLAKUAN 3	.136	5	.200*	.987	5	.967
HASIL PENELITIAN	PERLAKUAN 1	.219	5	.200*	.929	5	.589
	PERLAKUAN 2	.247	5	.200*	.817	5	.110
	PERLAKUAN 3	.200	5	.200*	.930	5	.596

a. Lilliefors Significance Correction

*. This is a lower bound of the true significance.

Dasar keputusan uji normalitas

Tabel V.2
HASIL PENELITIAN ANOVA

	Sum of Squares	Df	Mean Square	F	Sig.
Between Groups	394.477	4	98.619	14.568	.000
Within Groups	67.696	10	6.770		
Total	462.173	14			

HASIL PENELITIAN

LSD

(I) DOSIS PAC	(J) DOSIS PAC	Mean Difference (I-J)	Std. Error	Sig.	95% Confidence Interval	
					Lower Bound	Upper Bound
100	200	2.20333	2.12440	.324	-2.5301	6.9368
	300	-11.49000*	2.12440	.000	-16.2235	-6.7565
	400	-8.06000*	2.12440	.004	-12.7935	-3.3265
	500	-6.80667*	2.12440	.009	-11.5401	-2.0732
200	100	-2.20333	2.12440	.324	-6.9368	2.5301
	300	-13.69333*	2.12440	.000	-18.4268	-8.9599
	400	-10.26333*	2.12440	.001	-14.9968	-5.5299
	500	-9.01000*	2.12440	.002	-13.7435	-4.2765
300	100	11.49000*	2.12440	.000	6.7565	16.2235
	200	13.69333*	2.12440	.000	8.9599	18.4268
	400	3.43000	2.12440	.137	-1.3035	8.1635
	500	4.68333	2.12440	.052	-.0501	9.4168
400	100	8.06000*	2.12440	.004	3.3265	12.7935
	200	10.26333*	2.12440	.001	5.5299	14.9968
	300	-3.43000	2.12440	.137	-8.1635	1.3035
	500	1.25333	2.12440	.568	-3.4801	5.9868
500	100	6.80667*	2.12440	.009	2.0732	11.5401
	200	9.01000*	2.12440	.002	4.2765	13.7435
	300	-4.68333	2.12440	.052	-9.4168	.0501
	400	-1.25333	2.12440	.568	-5.9868	3.4801

*. The mean difference is significant at the 0.05 level.

Tabel V.4

HASIL PENELITIAN

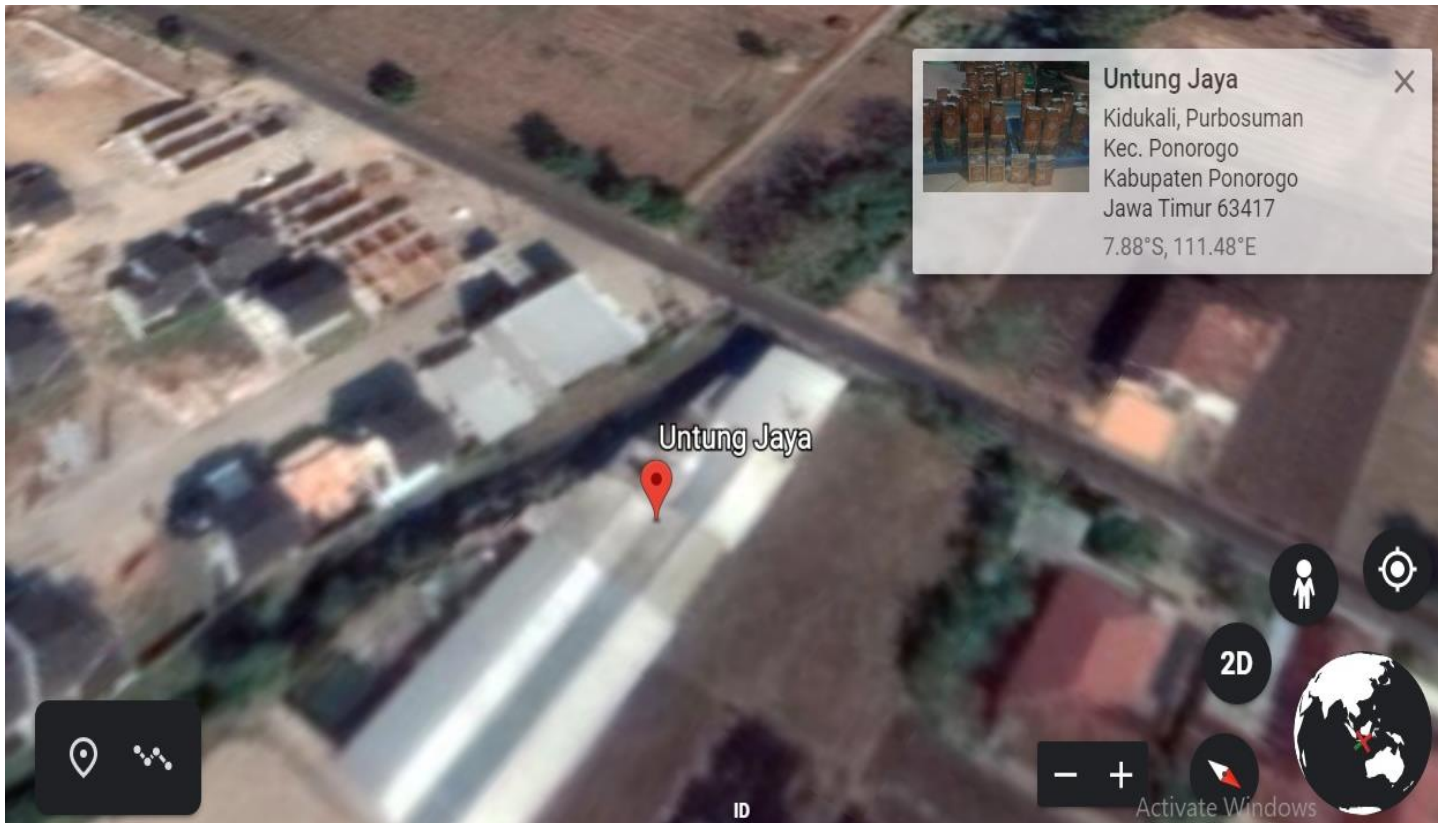
	DOSIS PAC	N	Subset for alpha = 0.05		
			1	2	3
Tukey HSD ^a	200	3	5.7367		
	100	3	7.9400	7.9400	
	500	3		14.7467	14.7467
	400	3			16.0000
	300	3			19.4300
	Sig.			.833	.057

Means for groups in homogeneous subsets are displayed.

a. Uses Harmonic Mean Sample Size = 3.000.

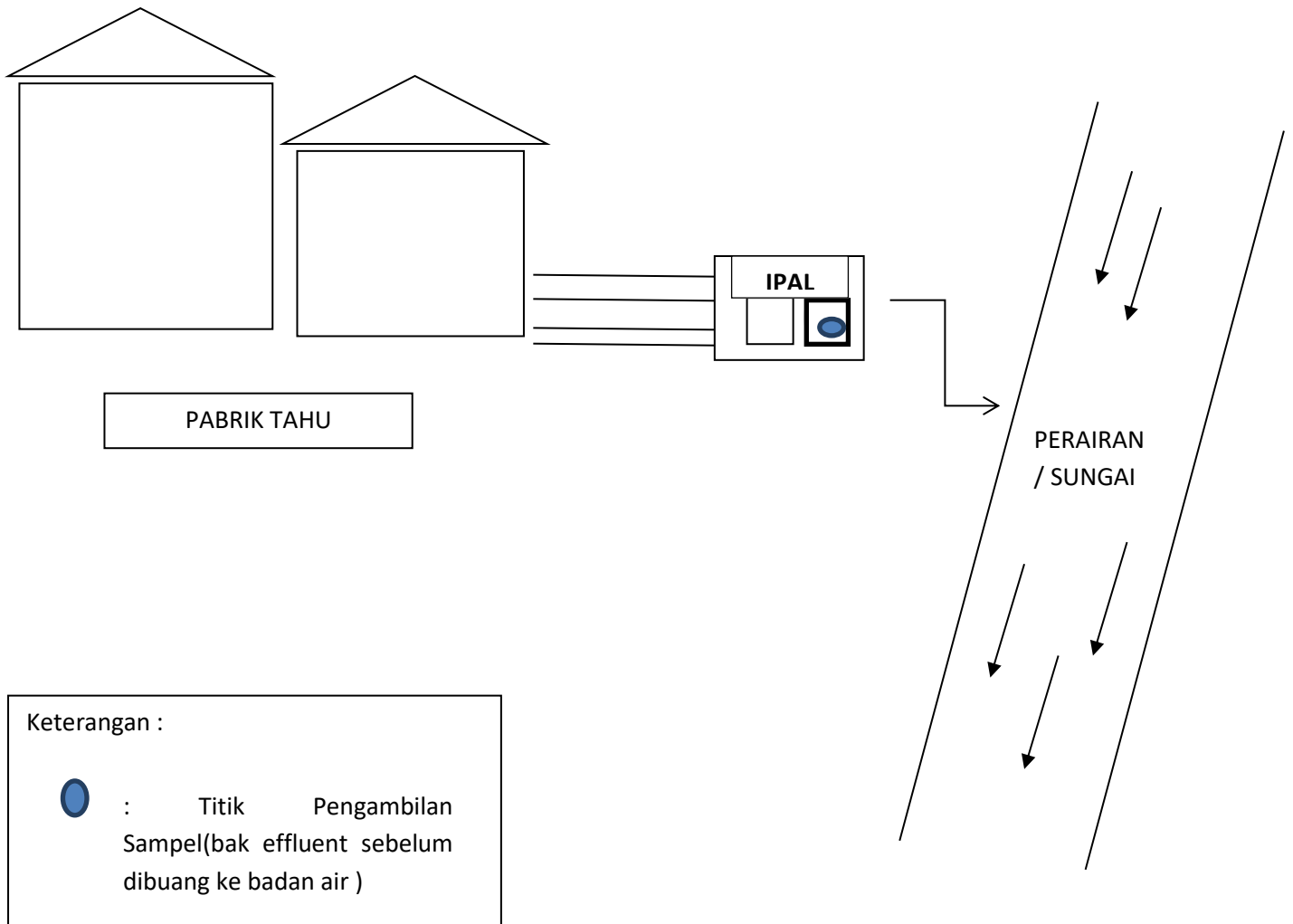
Lampiran III

Peta Lokasi Pabrik Tahu Untung Ponorogo



Lampiran IV

Titik Pengambilan Sampel



DOKUMENTASI PENELITIAN



Ipal bak ke 2



Ipal bak ke 4



Ipal bak 1



sampel air limbah tahu



koagulan pac dan flokulan superfloc



timbangan gram



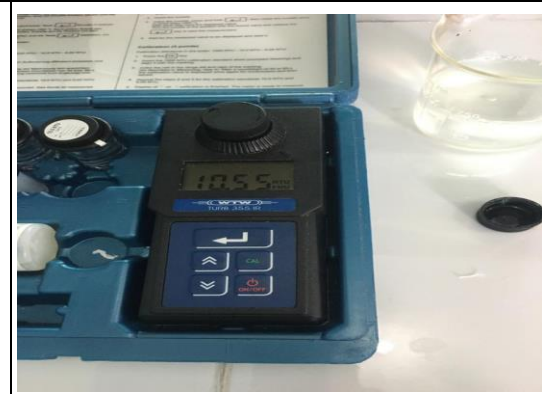
proses pengadukan



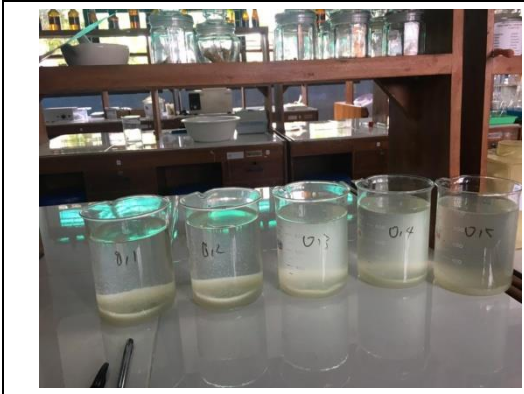
pendiaman selama 15 menit



hasil percobaan



pengukuran kekeruhan sebelum



hasil percobaan



hasil pengukuran setelah



foto bersama pemilik pabrik